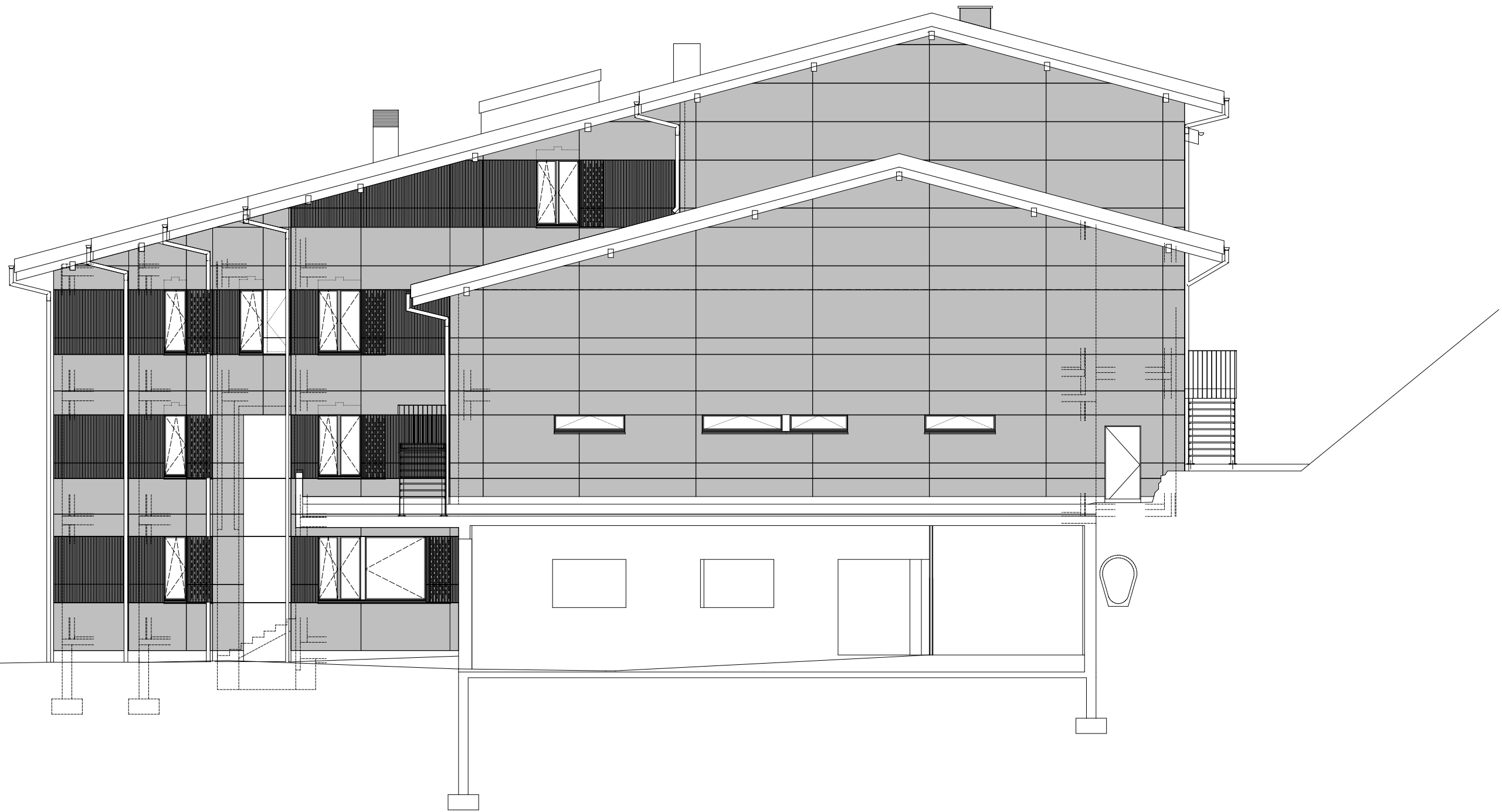


Nordfassade

0 2.5 5 10m



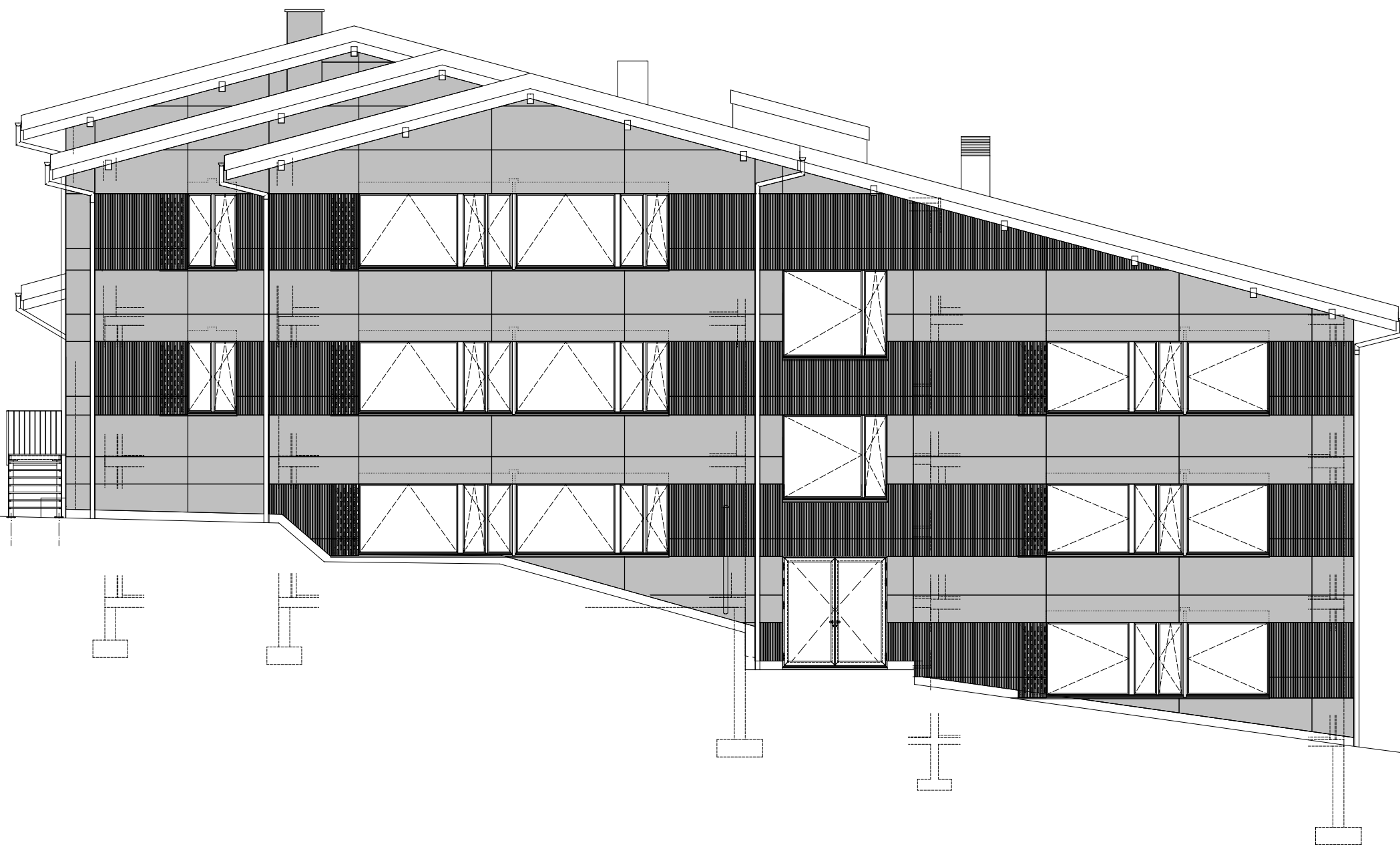
Ostfassade

0 2.5 5 10m

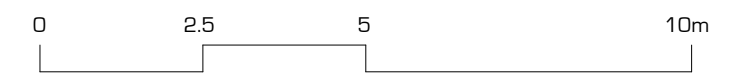


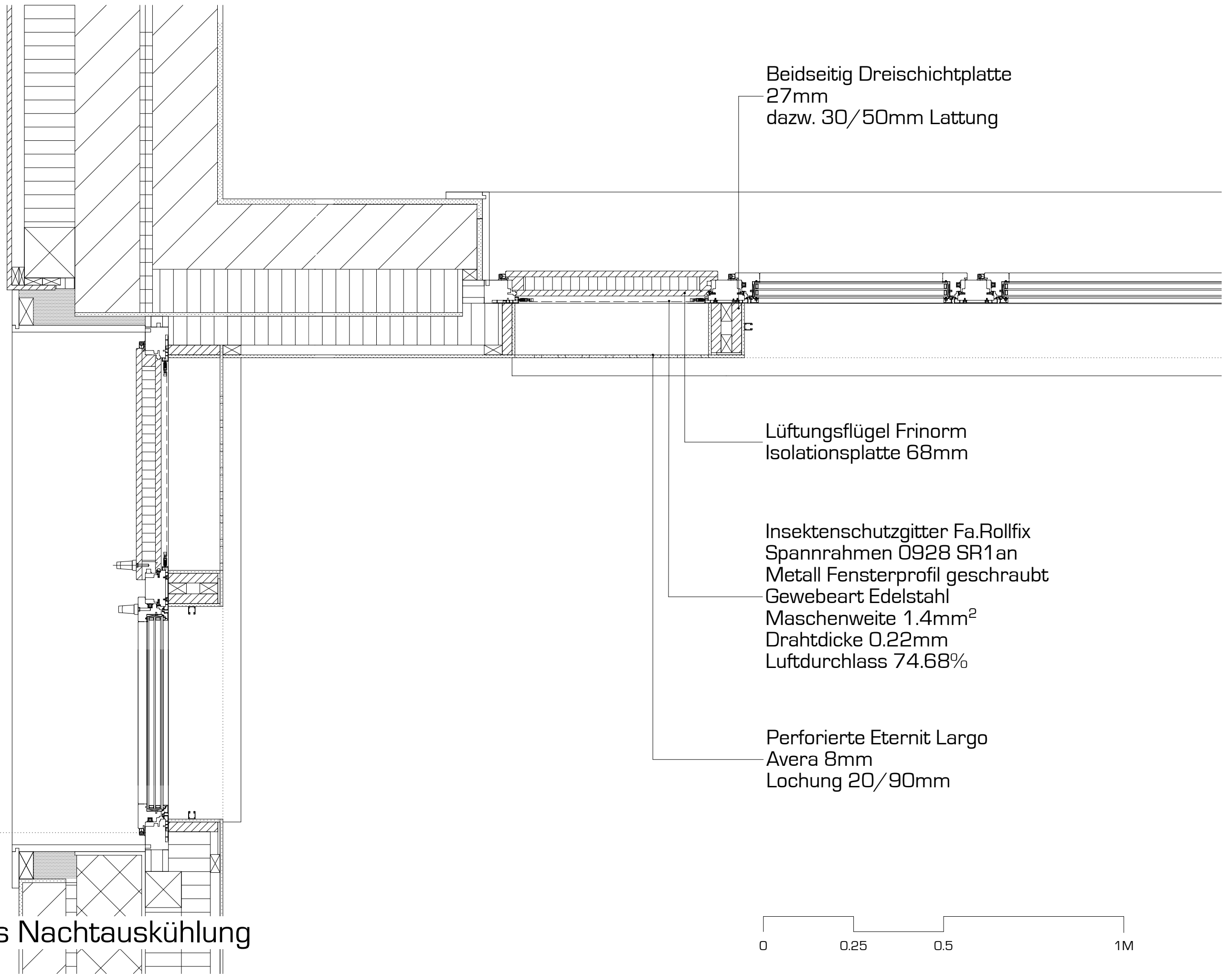
Südfassade





Westfassade



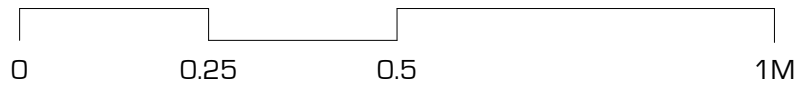


Beidseitig Dreischichtplatte  
27mm  
dazw. 30/50mm Lattung

Lüftungsflügel Frinorm  
Isolationsplatte 68mm

Insektenschutzgitter Fa. Rollfix  
Spannrahmen 0928 SR1 an  
Metall Fensterprofil geschraubt  
Gewebeart Edelstahl  
Maschenweite 1.4mm<sup>2</sup>  
Drahtdicke 0.22mm  
Luftdurchlass 74.68%

Perforierte Eternit Largo  
Avera 8mm  
Lochung 20/90mm



Grundriss Nachtauskühlung

