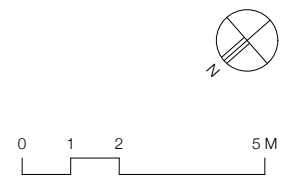
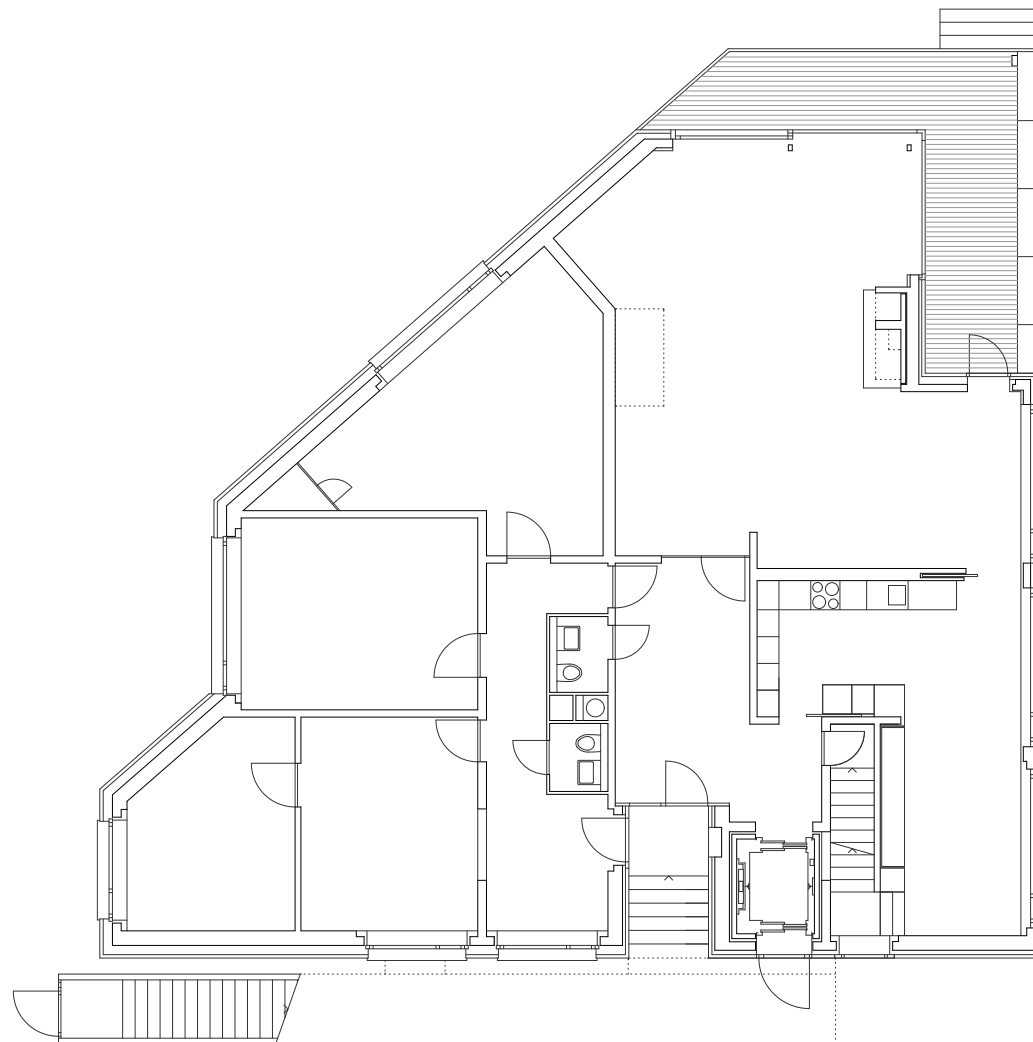
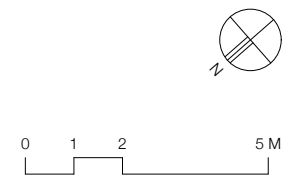


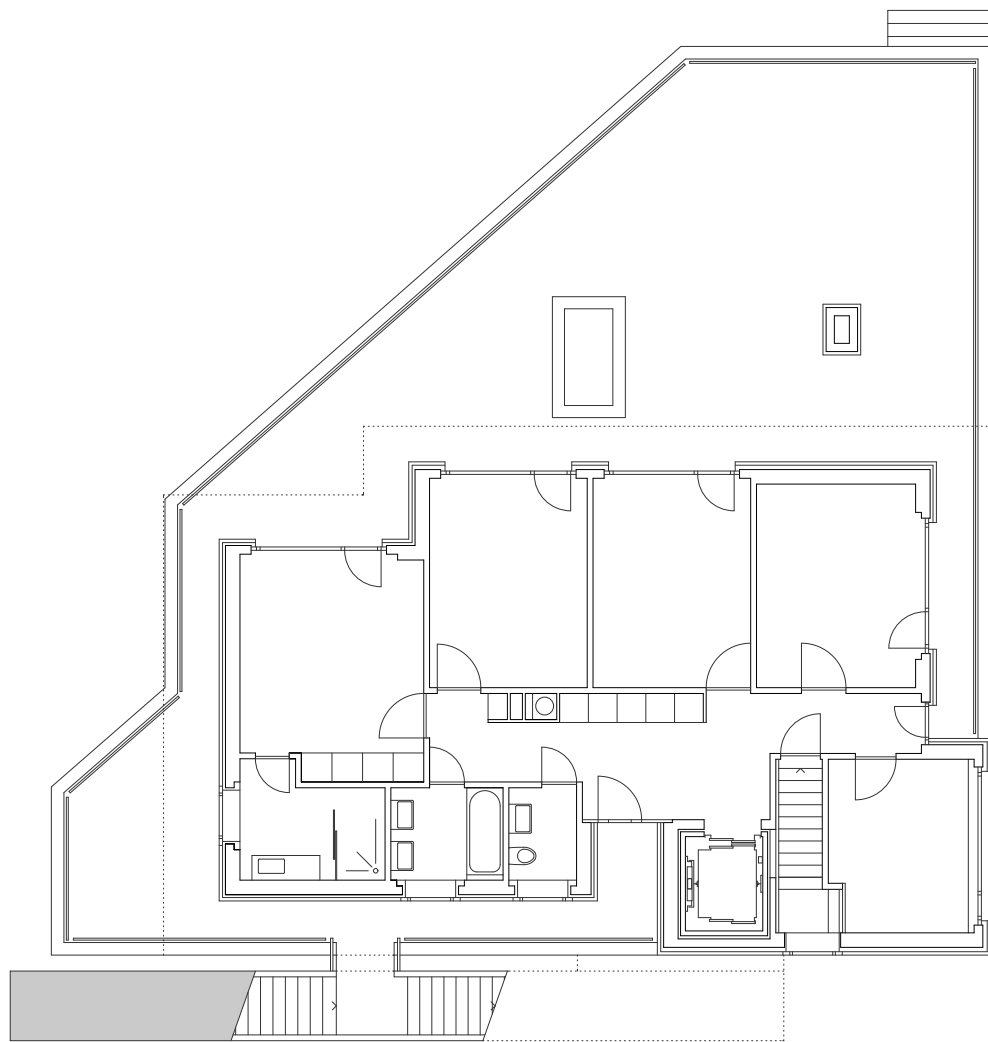
Untergeschoss



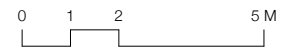


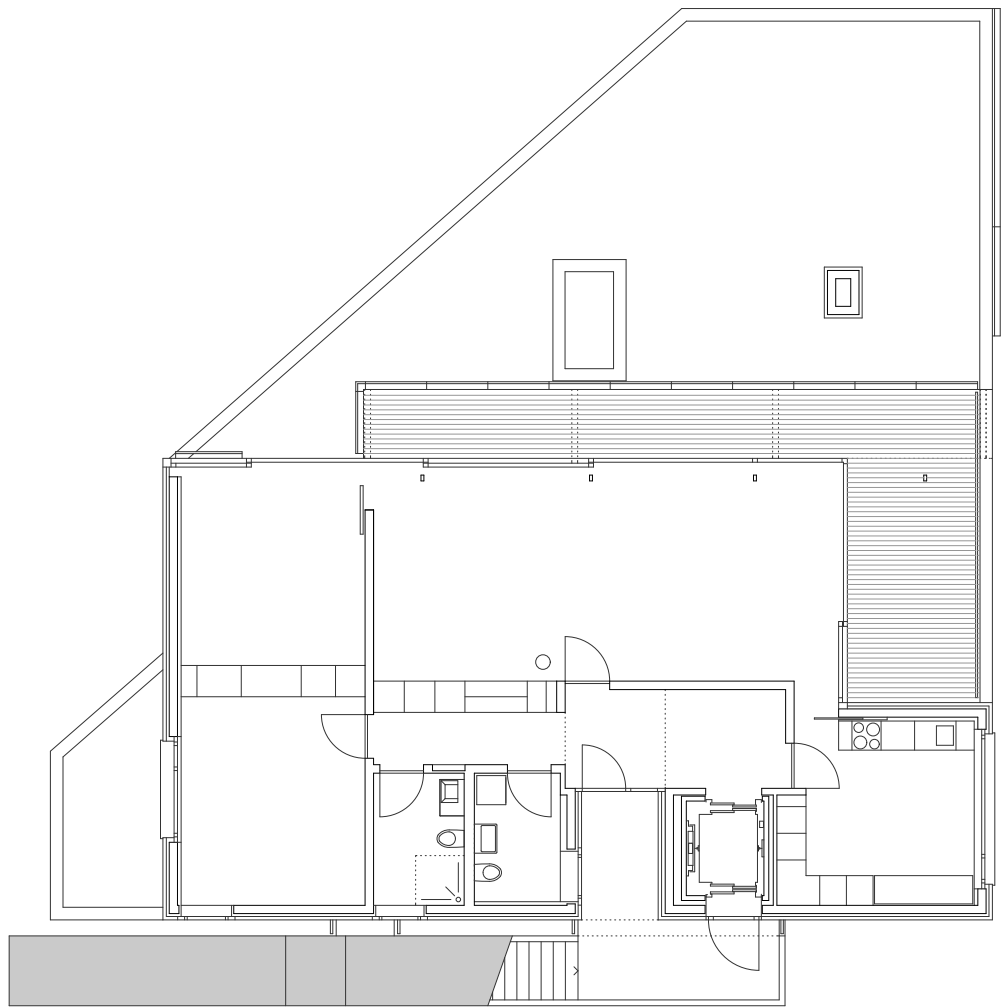
Erdgeschoss



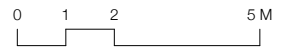


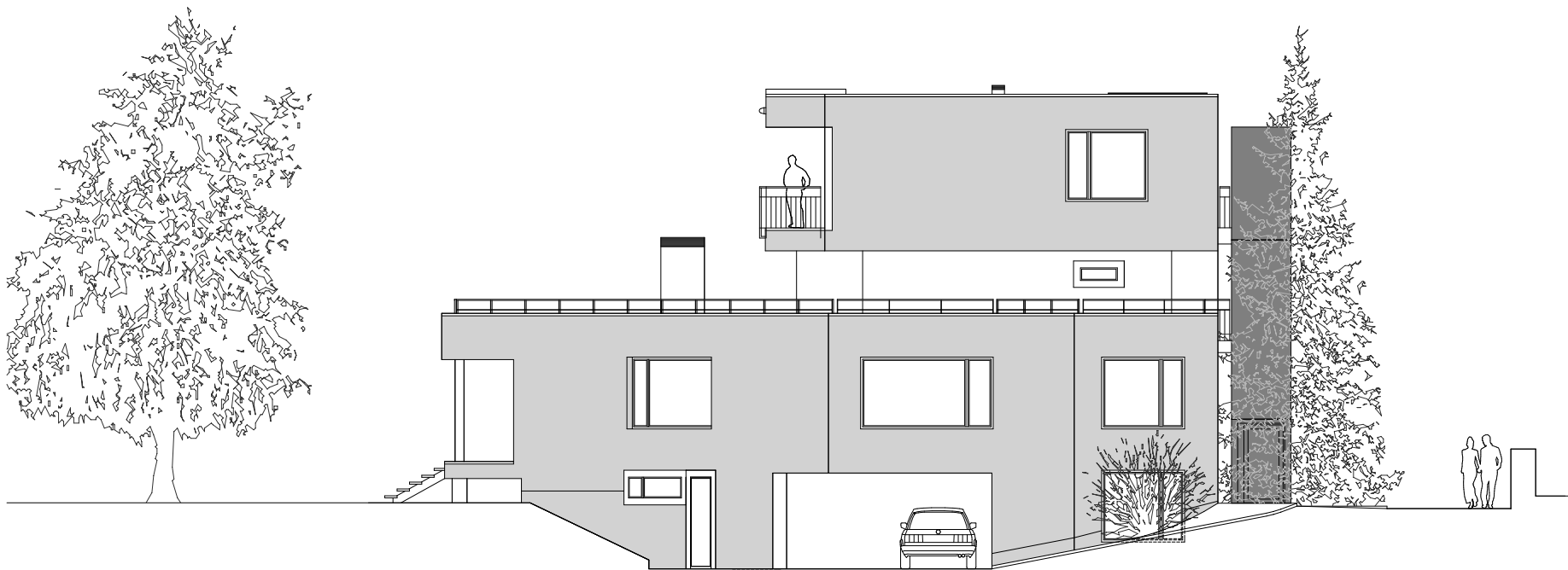
Obergeschoss



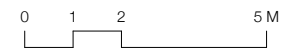


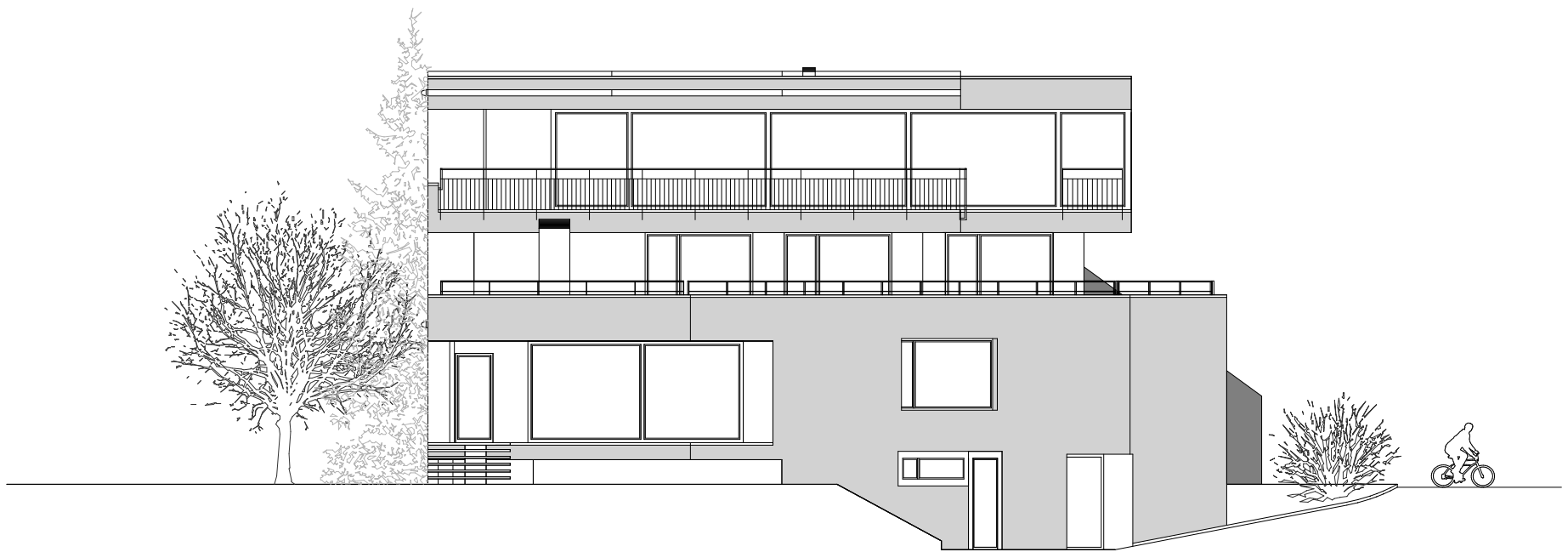
Dachgeschoss





Nordostfassade





Südostfassade





Südwestfassade

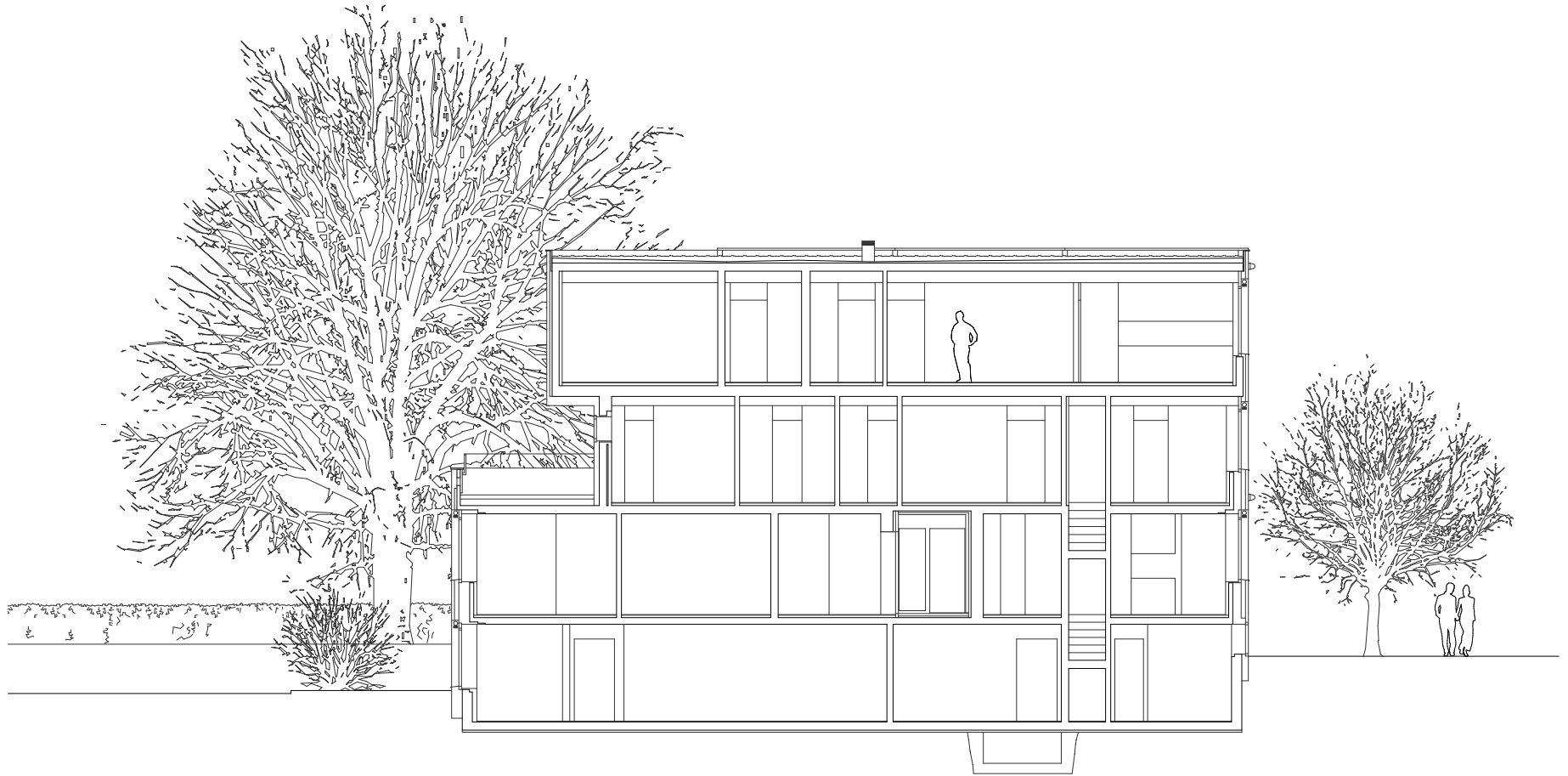




Nordwestfassade

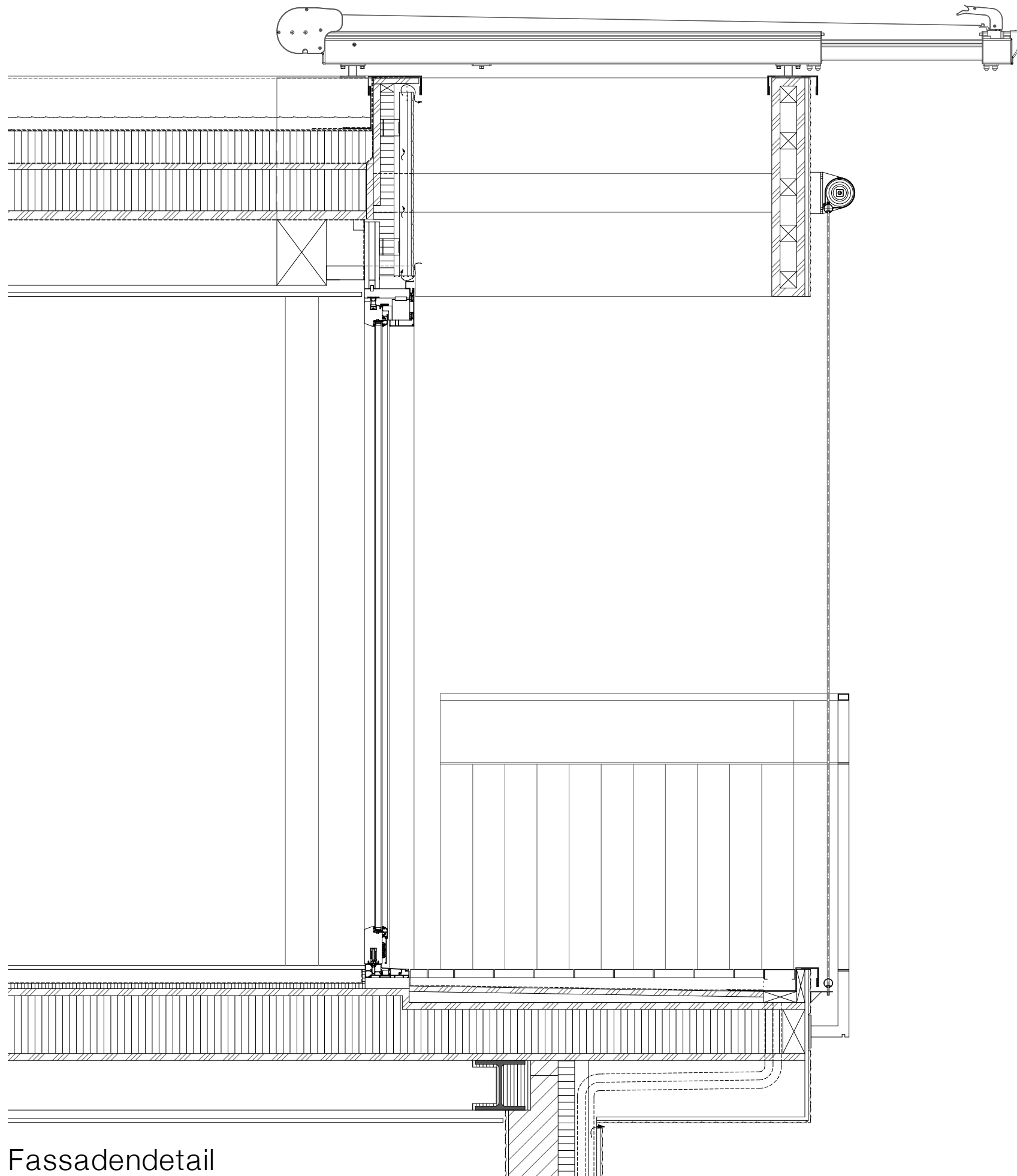






Querschnitt





Fassadendetail

Dachaufbau von aussen:

- Rundkies 40 mm
- Vliesmatte
- Abdichtung:
  - 1. Lage EGV3 / 2. Lage EP4
- Flumroc Prima im Gefälle 120-30 mm
- BSH-Element:
  - OSB-Platte 22 mm
  - Wärmedämmung 150 mm
  - OSB-Platte 27 mm
- Dampfsperre Sisalex 514
- Deckenbalken 240x180 mm
- Federschiene 26x12 mm
- GKP Platte 12.5 mm
- Deckenputz

Bodenaufbau von oben (Wohnung):

- Bodenbelag 15 mm
- Fliessestrich 50 mm
- PE-Folie
- Trittschalldämmung 20 mm
- BSH-Element:
  - OSB-Platte 22 mm
  - Wärmedämmung 220 mm
  - OSB-Platte 22 mm
- HEB 180 Stahlträger 180 mm
- Federschiene 26x12 mm
- GKP Platte 12.5 mm
- Deckenputz

Bodenaufbau von oben (Terrasse):

- Bodenbelag:
  - Holzbodenrost 30 mm
  - Schiftlattung 90 mm
  - Gummischrotmatte
  - Bitumenabdichtung 1-lagig
  - OSB Platte 22 mm
  - Gefällslattung 60-40 mm
- BSH-Element:
  - OSB Platte 22 mm
  - Wärmedämmung 160 mm
  - OSB Platte 22 mm
- Dampfsperre (unter Terrasse)
- HEB 180 Stahlträger 180 mm
- GKP Platte 12.5 mm
- Deckputz

